

IYBA-WE4A 2025/2026 APPLICATION - How To Apply



Implemented by

TEF Overview



The Tony Elumelu Foundation is the leading philanthropy empowering a new generation of African entrepreneurs, driving poverty eradication, catalysing job creation across all 54 African countries, and increasing women economic empowerment.

Since the launch of the TEF Entrepreneurship Programme in 2015, the Foundation has trained over 2.5 million young Africans on its digital hub, TEFConnect, and disbursed over \$100 million in direct funding to 21,000 African women and men, who have collectively created up to 1.5 million direct and indirect jobs. The Foundation's mission is rooted in Africapitalism, which positions the private sector, and most importantly entrepreneurs, as the catalyst for the social and economic development of the African continent.

Programme Overview



The Team Europe Initiative “Investing in Young Businesses in Africa – Women Entrepreneurship for Africa” (TEI IYBA-WE4A) is co-financed by the European Union (EU), the Organisation of African, Caribbean, and Pacific States (OACPS), and the German Federal Ministry for Economic Cooperation and Development (BMZ). Implemented by the Deutsche Gesellschaft für Internationale Zusammenarbeit (GIZ) through the BMZ-funded multi-donor project *“Employment Promotion for Women for the Green Transformation in Africa” (WE4D)*.

The initiative is implemented in partnership with the **Tony Elumelu Foundation (TEF)**, **Investisseurs & Partenaires (I&P)**, and **Goodwell Investments**.

The programme aims to empower women entrepreneurs in Sub-Saharan Africa, with a focus on green and sustainable businesses. By improving access to finance, business training, and networks, IYBA- WE4A supports economic inclusion, job creation, and sustainable development.

Eligible participants are women-led green businesses (0–5 years old) operating in Senegal, Togo, Malawi, Uganda, Cameroon, Kenya, Mozambique, and Tanzania.



IYBA –WE4A - Programme



The 7-Pillars



TEFConnect



**Business
Management
Training**



Mentorship



**Video Pitching
& Business Plan**



**Non-Refundable
Seed Capital
Funding**



**TEF Forum &
Networking**

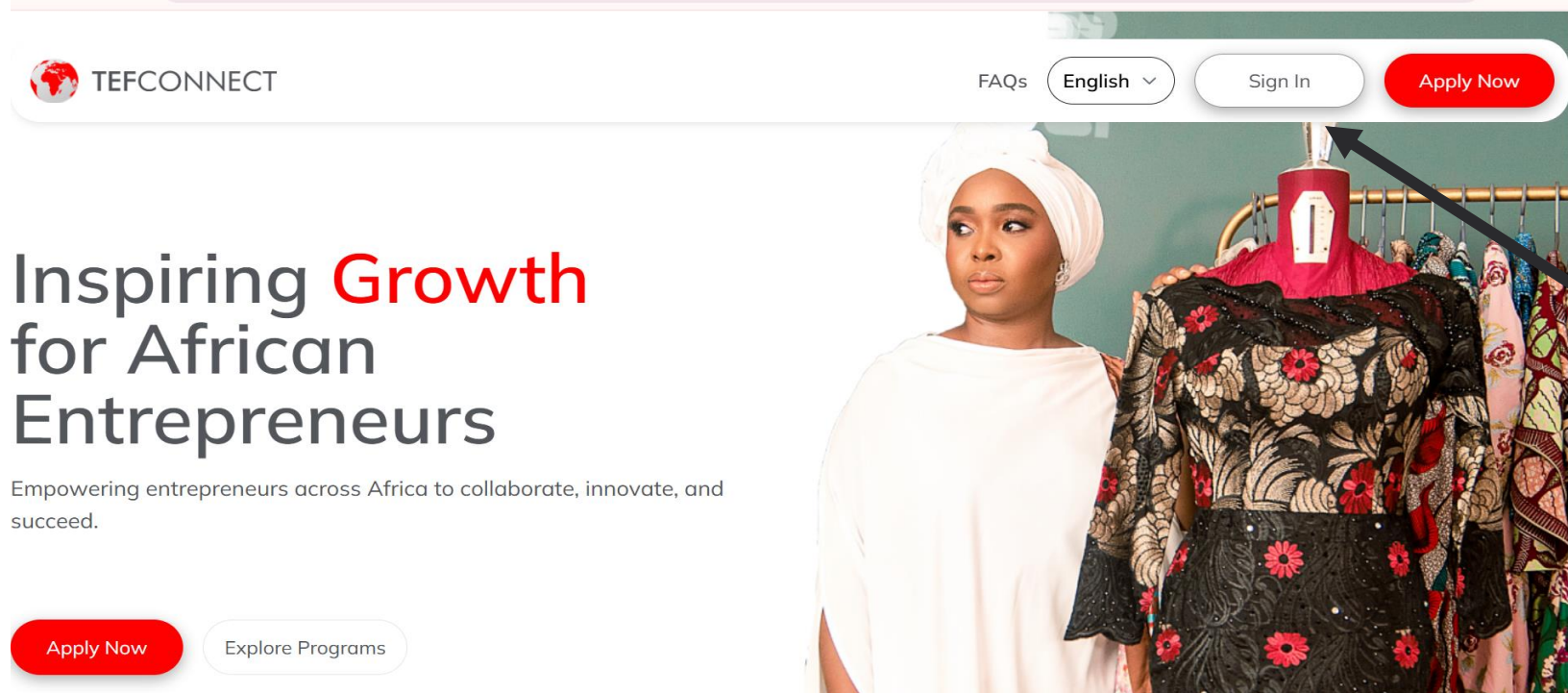


**Access to TEF
Alumni Network**



How To Register On TEFConnect

Applications for the **2025/2026 MBA-WE4A Programme** are open from **October 6th, 2025, until 11:59 pm (WAT) on January 25th**. To apply, please visit www.tefconnect.net.



Note: You will not be able to apply if you do not register.

If you already have an account, you can click on **"Sign in"**

1. For a new user, Click on **"Apply Now"** to start your application.

Registration 1/2



TEFCONNECT

Welcome Back
Please sign in to your account

New User?
Create an account?

Email

Password

Forgot Password?

Login

For **New Users**, You must first register your profile. Click on **“Create an account?”** to do so.

Note: You will only be able to start your application after completing your registration.

If you have forgotten your password, click on **“Forgot Password”** and follow the prompt to reset.

For **Existing Users** (if you already have an account), enter your registered email and password. Click on **“Login”** to start your application.



Registration 2/2

Create an account

complete the form to get started



Do you have an account?
Login here

Start your journey to limitless opportunities today

Email

Firstname Last name (surname)

Other names

Create your password too short

Confirm your password

1. As a new user, to continue the registration, fill in your **Email address, First Name, Surname.** and **create your password.**



Do you have an account?
Login here

Other names

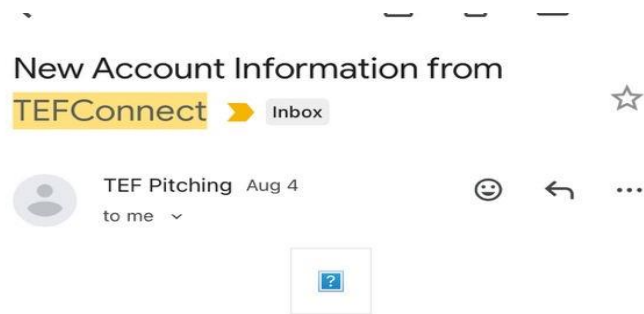
Create your password good

Confirm your password

By clicking create account, you agree to our Consent Clause for [Data Collection and Privacy Policy](#)

2. Read and agree to our Consent Clause for **Data Collection and Privacy Policy.** Then click on **“Create account”** TEFConnect button to continue.

Verification Page



New Account Created

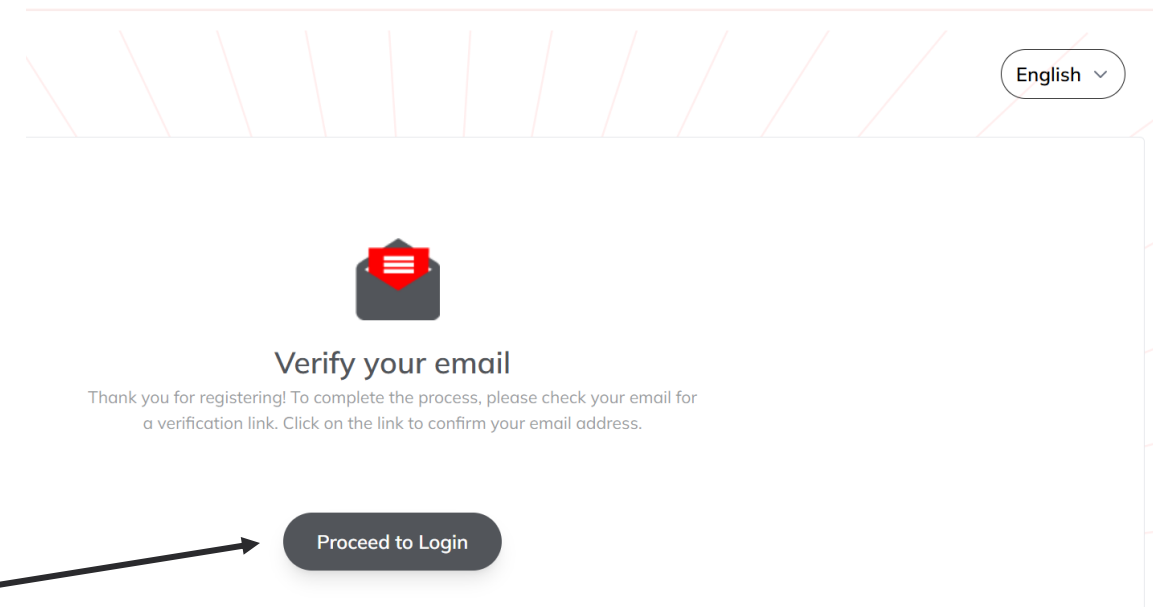
Hello Emmanuel Amedu,

We have created your account on the pitching platform. Your username and password are as follows.

Once you sign up, you will receive an email notification from info@tefconnect.net.

4. Go to your mailbox to verify your email. **Ensure you check your junk/ spam folder in your account.**

5. **Click on the verification link** in your email and click on **“Proceed to Login”** to login and create your profile on TEFConnect





TEFCONNECT

Welcome Back

Please sign in to your account

New User?
Create an account?

Email

Password

Forgot Password?

Login

6. Sign in with your valid email address and password

7. Then click on **Login** to proceed to see your profile and dashboard.

You may begin now your application!!!



TEFCConnect Application Process

**How To Apply to the IYBA-WE4A
Application**





The IYBA WE4A Application

Once you have successfully registered and created your profile, The next step will be to apply to the IYBA-WE4A Entrepreneurship Programme Application.

The application has been segmented the 5 sections listed below:

1. Personal Information
2. Business Idea & information
3. Business industry
4. Business Acumen questions
5. Declarations.

You are required to complete all sections by providing correct responses to the questions asked in the form.

After successfully completing and submitting the application you will receive a confirmation notification on screen and receive an email within 1 working day via your registered email.

Also check your junk, promotional or spam for this email notification.

Apply for
\$5,000
seed capital, training, mentoring
and access to networks.

Open to women with green business either in idea stage or no more than five years of operations.

Open Business Models: Sustainable Agriculture / Agro-Processing, Renewable Energy, Blue Economy / Aquaculture, Eco-tourism, Circular Economy / Waste Management/ Biomass.

Closed Business Models: Transportation / Logistics, Construction

Cameroon, Kenya, Malawi, Mozambique, Senegal, and Uganda.

2025 - January 25, 2026

connect.com



Dashboard

TEFCONNECT Dashboard English Adeola

Welcome to TEFConnect, Adeola
We've got this for you

Notice Board

The Entrepreneurship Programme application portal will open on **1st January 2025** and close at midnight on **1st March 2025**.

To begin your application, please review the overview for each of the available programmes and select the one that best aligns with your entrepreneurial goals:

- **2025 TEF Flagship Programme Overview:**
- **2025 AGUKA Ideation Programme Overview**

2025 Aguka Programme
The AGUKA IDEATION ENTREPRENEURSHIP PROGRAMME is a partnership with the Tony Elumelu Foundation, UNDP Rwanda and the Rwandan Ministry of Youths and Arts to support 100 Rwandan entrepreneurs between

BEGREEN AFRICA Programme
Welcome to the 2025 BEGREEN AFRICA Programme targeted at supporting green businesses.

Start Date: Wed Jan 01 2025 End Date: Sun Nov 30 2025

1. After logging in, you will be taken to the "dashboard"

Select the Women Entrepreneurship For Africa (IYBA-WE4A) Programme and click "**Start Application**".

TEFCONNECT Dashboard

MENU Dashboard

Apply for **\$5,000** seed capital, training, mentoring and access to networks.

Women Entrepreneurship For Africa (IYBA-WE4A)

Welcome to the 2025/2026 Women Entrepreneurship for Africa programme targeted at supporting green businesses.

Start Date: Mon Oct 06 2025 End Date: Sun Jan 25 2026

Overview

Start Application

Programme application portal will open on **1st January 2025** and close at midnight on **1st March 2025**.

To begin your application, please review the overview for each of the available programmes and select the one that best aligns with your entrepreneurial goals:

- **2025 TEF Flagship Programme Overview:**
- **2025 AGUKA Ideation Programme Overview**
- **2025 IYBA-WE4A Programme Overview**

Once you have reviewed the programme details, click "**Proceed to Application**" on your preferred programme.

We wish you all the best!

2. You can read more about the programme by clicking on "**Overview**".



Programme Overview

Program Overview

Please read carefully!

THEIYBA-WE4A ENTREPRENEURSHIP PROGRAMME OVERVIEW

WE4A (Investing in Young Business in Africa- Women Entrepreneurship for Africa) Entrepreneurship Programme is a programme jointly supported by the European Union (EU), the Organisation of African, Caribbean and Pacific States (OACPS) and the German Federal Ministry for Economic Cooperation and Development (BMZ), and implemented by the Tony Elumelu Foundation (TEF), the Deutsche Gesellschaft für Internationale Zusammenarbeit (GIZ) GmbH, and the Seedstars Association for Entrepreneurship in Emerging Markets (SAFEEM).

Programme Objective

The programme aims to empower women entrepreneurs in Sub-Saharan Africa by enhancing their access to finance and business knowledge. It focuses on green businesses and seeks to drive economic inclusion, job creation, and sustainable development.

Target Countries

Women entrepreneurs operating green businesses (0-5 years old) in the following countries are eligible:

- Be physically present at the designated venue and time
- Bring your valid ID, business registration, and supporting documents

Further details will be shared during the programme.

Next Steps:

Participants who successfully pass the physical verification will proceed to the final document review by the TEF Audit Team.

6. THE SEED CAPITAL DISBURSEMENT

The Participants who:

- Complete all programme phases
- Submit valid business documents
- Have their business bank accounts verified

...will receive seed capital in their business bank accounts. They will also be awarded a Programme Certificate of Completion and Achievement.

3. Once you are done reading, click on **"Close"** →
To return to the dashboard to start your application.

Close



Dashboard

TEFCONNECT Dashboard English 0 Adeola

WELCOME TO TEFCONNECT, ADEOLA
We've got this for you

Notice Board

The Entrepreneurship Programme application portal will open on **1st January 2025** and close at midnight on **1st March 2025**.

To begin your application, please review the overview for each of the available programmes and select the one that best aligns with your entrepreneurial goals:

- **2025 TEF Flagship Programme Overview:**
- **2025 AGUKA Ideation Programme Overview**

2025 Aguka Programme

The AGUKA IDEATION ENTREPRENEURSHIP PROGRAMME is a partnership with the Tony Elumelu Foundation, UNDP Rwanda and the Rwandan Ministry of Youths and Arts to support 100 Rwandan entrepreneurs between

BEGREEN AFRICA Programme

Welcome to the 2025 BEGREEN AFRICA Programme targeted at supporting green businesses.

Start Date: Wed Jan 01 2025 End Date: Sun Nov 30 2025

Women Entrepreneurship For Africa (IYBA-WE4A)

Apply for **\$5,000** seed capital, training, mentoring and access to networks.

Welcome to the 2025/2026 Women Entrepreneurship for Africa programme targeted at supporting green businesses.

Start Date: Mon Oct 06 2025 End Date: Sun Jan 25 2026

Overview

Start Application

Programme application portal will open on **1st January 2025** and close at midnight on **1st March 2025**.

To begin your application, please review the overview for each of the available programmes and select the one that best aligns with your entrepreneurial goals:

- **2025 TEF Flagship Programme Overview:**
- **2025 AGUKA Ideation Programme Overview**
- **2025 IYBA-WE4A Programme Overview**

Once you have reviewed the programme details, click **"Proceed to Application"** on your preferred programme.

We wish you all the best!

To select the Women Entrepreneurship For Africa (IYBA-WE4A) Programme, click **"Start Application"**.



Terms & Conditions

TERMS & CONDITIONS

Please read carefully!

TERMS & CONDITIONS FOR APPLYING AND PARTICIPATING IN THE 2025/2026 IYBA
-WE4A PROGRAMME

1. Definitions

The following definitions shall apply unless the context otherwise requires:

"African(s)" means citizens or nationals of countries in Africa, whether or not resident in Africa. This also includes legal residents of an African country with the right to work and do business in that country.

"Applicant" means an eligible African who submits an application for participation in the Programme.

"Application" means the online entry form for the Programme completed and submitted by an Applicant on TEFConnect.

"Application Window" means the period commencing from October 6, 2025, to January 25th, 2026, during which Applications can be submitted.

11.2. If, for any reason, the Programme is not capable of running as planned for any reason, the Promoter reserves the right to cancel, terminate, modify, or suspend the Programme. The Promoter shall not be liable for failure to implement the Programme in accordance with these Terms & Conditions or for any loss arising from modification, suspension, or cancellation of the Programme (including failure to pay Seed Capital) and shall endeavour to communicate any changes or cancellations at the earliest possible opportunity.

11.3. The Promoter assumes no responsibility for damages, losses, or injuries that result from participation in this Programme or acceptance to be part of the Programme.

12. General

12.1. Internet access is required for the Application process.

12.2. The Promoter has the right and discretion to waive the application of any of these Terms & Conditions as it may deem fit without recourse to any Applicant or Programme Participant.

12.3. This Programme is governed by the laws of the Federal Republic of Nigeria, and in the event of any conflict arising from an Applicant's participation in the Programme, Applicants agree to submit to the exclusive jurisdiction of the Nigerian Courts.

4. Please read the terms & conditions and click to **"Accept"** or **"Decline"**

Note: if you choose to decline, you will not be able to continue your application.

Accept

Decline

We wish you all the best!



Application Page 1 / 7

TEFCONNECT English 0 Adeola

Women Entrepreneurship For Africa (YBA-WE4A)

APPLICATION STAGES

- Personal Information
- Business idea & information
- Business Industry
- Business acumen test

This application is for Women only. Only women with businesses in Cameroon, Kenya, Malawi, Mozambique, Senegal, Tanzania, Togo, and Uganda are eligible for this specific programme.

Personal Information

STEP 1 OF 13

Application Progress %

Title*
--Select--

Surname* Bojuwoye Firstname* Adeola

5. Complete the personal information section in the application form with accurate details.

Note: Some information has been pre-filled with information provided during the platform registration

Relationship* --Select--

Email*

Please state any medical conditions or disabilities (N/A if none)

Medical Disabilities*
--Select--

6. Upon completing the section on Personal Information, click on "**Save and continue**" to proceed to the next page

Save and continue

Application Page 2/7



7. Proceed to the **“Business Idea & Information”** section and fill with accurate details. Click on **“Save and Continue”** as you continue the application.

Others

Before selecting others, ensure your business sector does not belong in the sector categories above

Does your company/ the company the individual works for, apply methods or approaches to reduce environmental impact of core business processes, of products of services?

Previous

Save and continue

8. After completing all questions in this section, click on **“Save and Continue”** to preview your application.



Application Page 3/7

8. Review your responses to ensure that all responses are accurate and true.

Note: you will not be able to edit after submission.

Others

Before selecting others, ensure your business sector does not belong in the sector categories above

Does your company/ the company the individual works for, apply methods or approaches to reduce environmental impact of core business processes, of products or services?

Recycling and reuse of resources

TEFCONNECT English 0 Adeola

Application Preview

Please check your submissions carefully before final submission

First Name	Surname	Middle Name
Adeola	Bojuwoye	Paul

Title	Select your gender	
Mrs.	2001-02-14	Female

APPLICATION STAGES

- Personal Information
- Business idea & information
- Business Industry
- Business acumen test

Go Back

Proceed

8. After preview your application, click on "**Proceed**" to continue to the next stage.



Application Page 4/7

9. Continue your application by clicking on **"Proceed to Test"** to proceed.

Application Type
Women Entrepreneurship For Africa (IYBA-WE4A)

2025/2026 IYBA-WE4A Application Assessment

Test Instruction

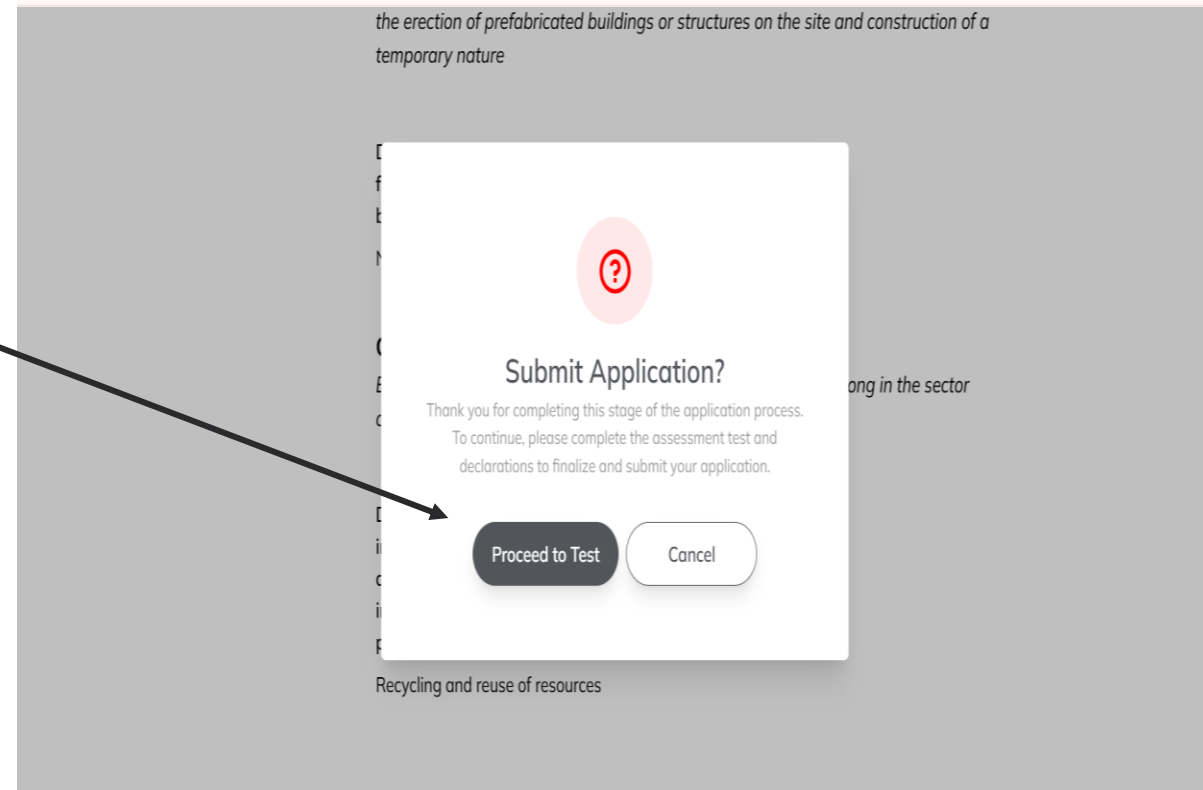
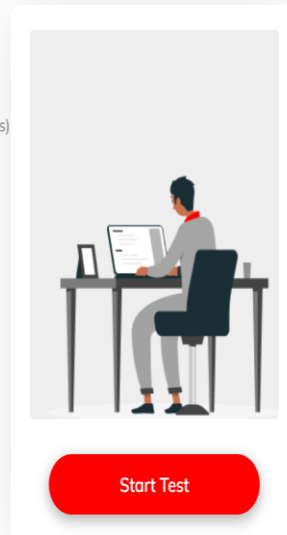
Read the following carefully!
The assessment is divided into two sections (Cognitive & Business Acumen questions) and requires 40 mins to complete.
It would help if you took the assessment in an environment free of distractions with optimal concentration.
Please note that you are to answer all questions, and you can take this assessment only once.

Business acumen test

Duration
40 Minutes

APPLICATION STAGES

- Personal Information
- Business idea & information
- Business Industry
- Business acumen test
- Declarations



This is the **"Application Assessment"** section. This section contains 20 questions to be answered in 40 minutes. Try to answer all question as correctly as you can within the allotted 40 minute.

10. Click on **"Start Test"** to commence.

Application Page 5/7



TEFCONNECT

A source of pollution

A beacon of hope for a sus

A contributor to resource d

Ignoring climate change

Submit Test?

By clicking "yes", the test will be submitted. Do not proceed if you are not ready to submit the test

Yes, Continue Cancel

Time Left
37:14

20 TOTAL QUESTIONS

20 ANSWERED

0 UNANSWERED

Previous Next

11. Once you complete the test, Click on **"Yes, Continue"**



Application Page 6/7

TEFCONNECT English 0 Adeola

Application Type

DECLARATIONS

Please complete the following

Have you applied for the TEFConnect Programme previously? If yes, which year(s)?

Yes No

Have you received seed capital from the TEFConnect Programme for the same idea/ business in previous cycles? If yes, which year(s)?

Yes No

12. You will now fill "**Declarations**" to complete your application. Answer the questions honestly.

Have you or your business partner(s) ever been investigated, arrested, or penalized for any crime or terrorist related charges?

Yes No

Are you a current or previous staff of any TEF affiliated company?

Yes No

Are you in business with any TEF staff or staff of any TEF affiliated company (TEF affiliated companies Meaning: includes any company in the Heirs Holdings investment portfolio)?

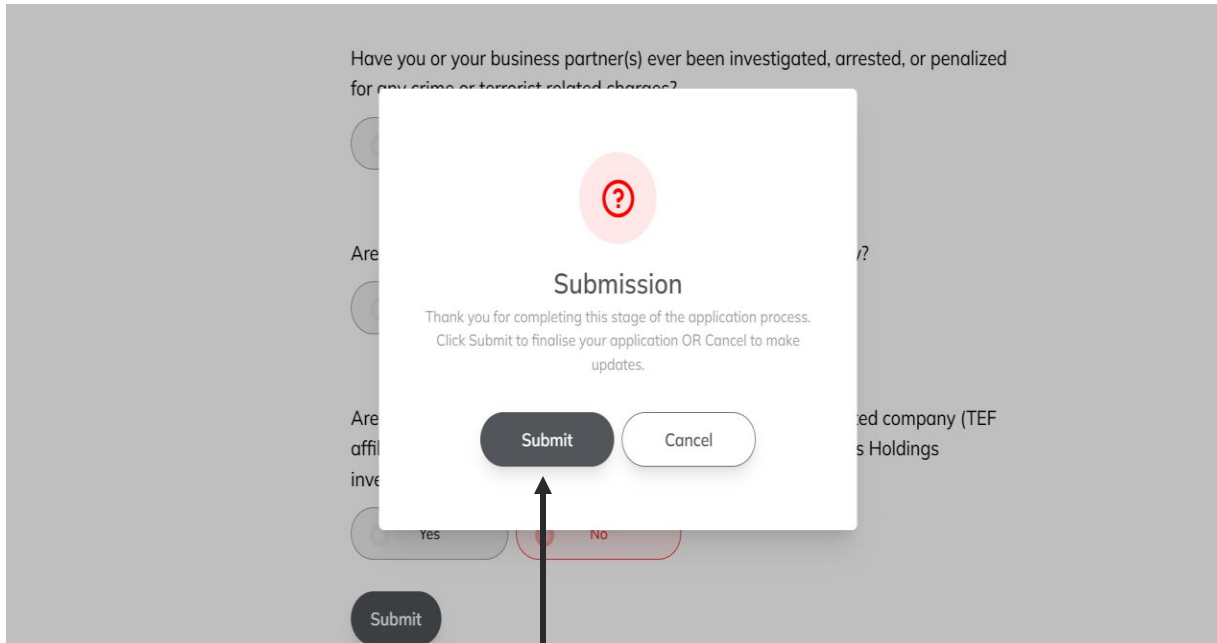
Yes No

13. After answering the questions, click on "**Submit**"





Application Page 7/7



14. Click "**submit**" to confirm submission.

Dear Applicant,

Thank you for your interest in the 2025/2026 IYBA-WE4A Entrepreneurship Programme and for successfully submitting your application.

Your unique Programme ID is undefined. Please keep this ID safe for future reference.

What's Next

The IYBA-WE4A team will contact you via email in the first week of February to inform you of your eligibility status and next steps. Kindly check your inbox regularly—including your spam/junk folder—to ensure you don't miss any communication from us.

We wish you success as you progress on this journey, we value your commitment to driving change through entrepreneurship and look forward to seeing the impact your business can make in transforming Africa.

Application ID :

[Go to Dashboard](#)

You have now completed your application! You will receive an email. Kindly ensure that you check your junk/ spam folder .

www.tonyelumelufoundation.org

Frequently Asked Questions



Q1: What are the eligibility criteria for the IYBA-WE4A Entrepreneurship Programme?

A: It is open to businesses that are between 0 and 5 years old at the time of application. Businesses older than 5 years are not eligible. Open exclusively to women entrepreneurs with green business ideas or existing green businesses in Senegal, Tanzania, Uganda, Cameroon, Kenya, Mozambique, Malawi, and Togo. For existing businesses, business registration must not exceed five years at the time of application. Eligible Applicants must be at least 18 years and above.

Q2: How do I apply?

A: Applications can be submitted on www.tefconnect.com, and will be open from 6th of October 2025 to 11:59pm on the 25th of January 2026. Ensure to complete your application well ahead of the deadline.

Q3: Can I apply to more than one Entrepreneurship programme?

A: No, applicants are advised to apply to only one programme. We encourage you to carefully review the programme overview and select the one that best suits your entrepreneurial and business goals.

Q4: Is there a registration fee to be paid before the IYBA-WE4A Application?

A: No, it is FREE! TEF has NOT appointed anyone to act on her behalf to conduct any part of this Programme. If anyone is asking you to pay any amount of money in exchange for application support, it is a scam. Please report it immediately by sending an email to whistleblower@tonyelumelufoundation.org. We will ensure the confidentiality of your information.

Q5: I have signed up on tefconnect.com but no confirmation email received

A: Kindly ensure to check your inbox, spam, promotional and junk mailboxes for confirmation emails. Be sure to send an email to enquiries@tonyelumelufoundation.org for any further assistance.

Q6: While filling my application on tefconnect.com, I am unable to click on "CONTINUE" to move to the next page of my application

A: If you experience any issues with filling your application. Kindly use the following steps:

- i. Check your internet connectivity

Frequently Asked Questions



- ii. Sign out of the platform and clear your browser cache
- iii. If the issue persists, please send an email to enquiries@tonyelumelufoundation.org with detailed reference (explanation of the issues faced) either with text, image or video and we will resolve.

Q7: Can I use a student ID to apply?

A: No, only government-issued IDs that clearly display your date of birth and a clear photograph of you are accepted.

Q8: I am unable to upload my ID/photo

A: Kindly ensure that you are uploading a Jpeg/png file no more than 1mb in size. If the issue persists, kindly send a screenshot of the error message to enquiries@tonyelumelufoundation.org

Q9: Can I edit my application after submission?

A: Once submitted, applications cannot be edited. We recommend reviewing your application thoroughly before submitting.

Q10: What is the next step after applying on TEFConnect?

A: Once you have successfully submitted your application, you will get a notification about your status. Kindly note that a third party will review applications that meet the TEF cut-off score. The final selected Programme applicants and the unsuccessful applicants will be informed accordingly.

Q11: Can I reapply after being rejected in previous years?

A: Yes, we encourage you to reapply to our programme until you are successful. However, participants disqualified from previous programmes are not allowed to reapply to any of the programmes.

Frequently Asked Questions



Q12: If I have received seed capital from previous TEF Entrepreneurship Programmes, can I apply to the other programmes as a fresh applicant?

A: No, Entrepreneurs who have received seed capital from any of the programmes implemented by the Tony Elumelu Foundation are considered as Alumni and are not eligible to apply to any of the programmes.

Q13: Which mobile number should I use for application?

A: It is advisable to use a phone number that you have access to 24hrs and is accessible via WhatsApp number.

Q14: Can I change my email address during the programme after applying?

A: No, your email address is your unique identifier. Kindly ensure that you use Gmail, Yahoo mail or any other email domain that is reliable and always accessible by you. You CANNOT change your email at any time during the programme.

Q15: Does it mean I am eligible to receive seed capital immediately after application?

A: No, participants who are shortlisted after the application will need to complete all programme phases and meet the programme requirements to become eligible for seed capital.

Q16: I have two ideas. Can I submit them separately?

A: No, Applicants are expected to apply with only one existing business or business idea. Applicants found to have applied multiple times in the same cycle or in different cycles will be disqualified.

Q17: Can I apply with 2 email addresses?

A: Applicants are only allowed to submit an application using one email address. Duplicate applications using different email or personal information will not be considered and removed.

Frequently Asked Questions



Q18: What documents do we need to upload when applying?

A: When filling the application form on TEFConnect, you will be required to upload the documents below. Also, please ensure to use valid phone numbers that are on WhatsApp to apply to the programme. The documents are:

1. Valid Government-issued Identification
2. Applicant's headshot
3. Official Business Registration Certificate- if you have an existing business not operational for more than Five years.

Q19: How long do I have to wait to get feedback on my application?

A: You will get feedback immediately after completing your application. Please lookout for a prompt on the platform immediately after submitting your application and via email from TEFConnect (please check your junk or promotional folder for this information).

Q20: Question: What happens if I miss the application deadline for the programme?

A: Missing the application deadline will affect your eligibility to continue the programme.

Q21: Can I apply if I am part of a team or partnership?

A: Yes, you can apply. However, only one person can be the principal applicant.

Q22: What language should I use to fill the application?

A: Applications must be completed in English, Portuguese or French.

Q23: Can I apply if I have a business partner who is male?

A: Yes, but the principal applicant must be female as the programme is exclusively for women-led businesses.



Contact us:

If you have any additional questions
on how to apply to the Programme,
please send us an email at
enquiries@tonyelumelufoundation.org
or send us a message on **WhatsApp**
+23417006713

Thank you and
GOOD LUCK!