

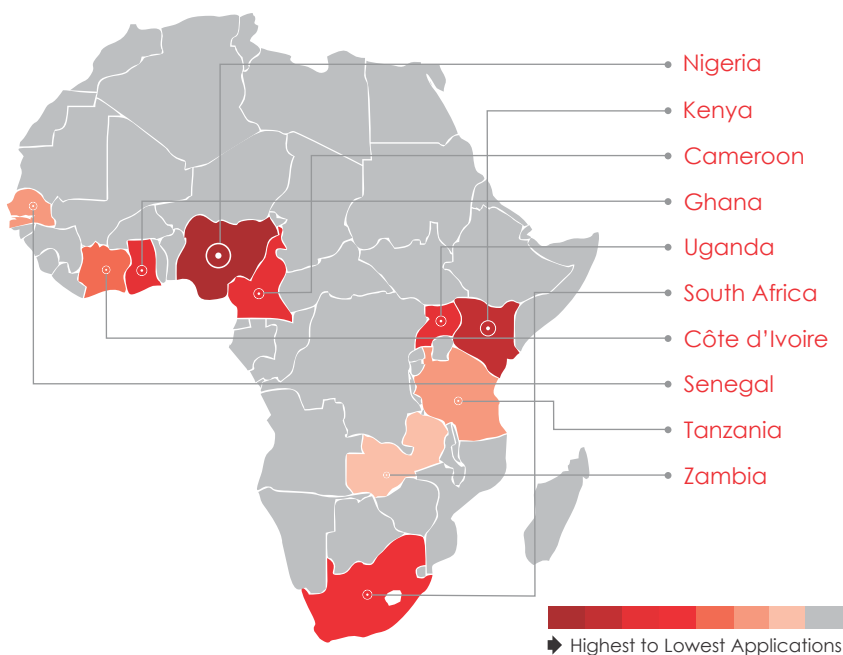


TEF ENTREPRENEURSHIP PROGRAMME 2015 APPLICATIONS AT A GLANCE

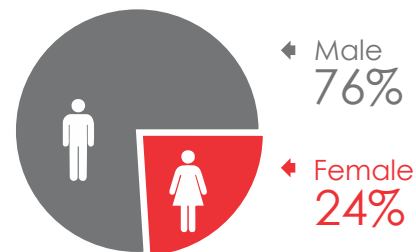
VOLUME OF APPLICATIONS



THE TOP 10 COUNTRIES BY APPLICATIONS



GENDER DISTRIBUTION



STAGE OF BUSINESS

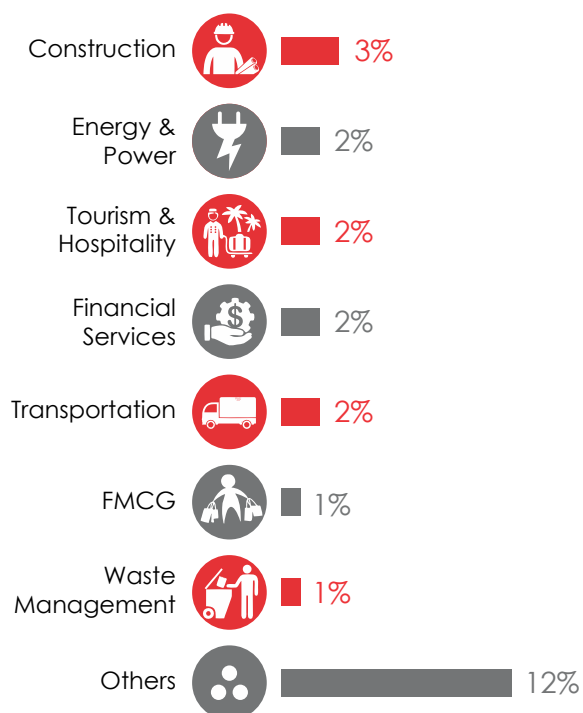
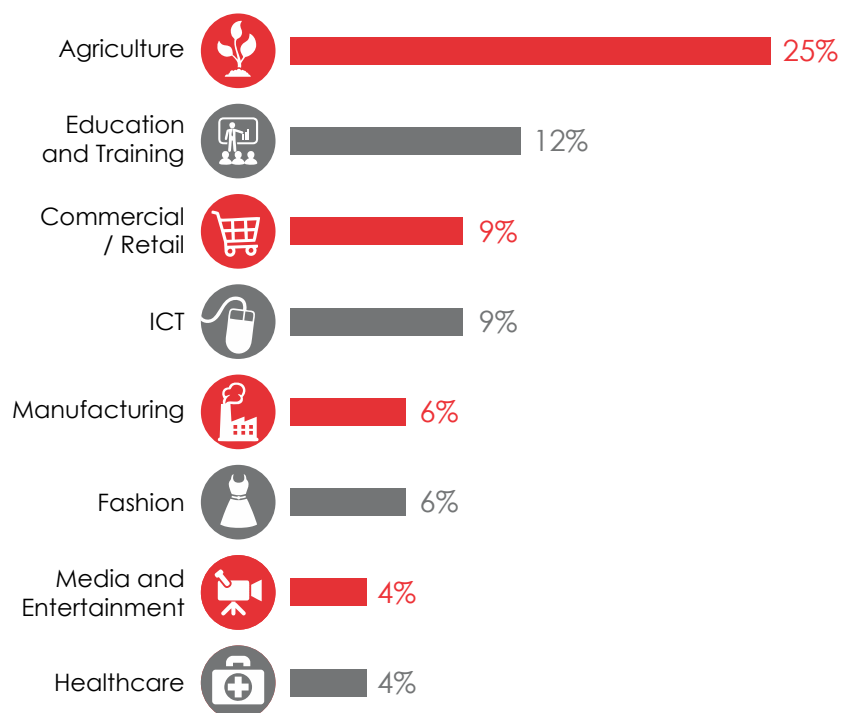
A relatively even spread in terms of stage of business for the applications received.



SECTORS REPRESENTATION AMONG APPLICANTS

High level of diversity in terms the range of business ideas proposed by applicants in 2015.

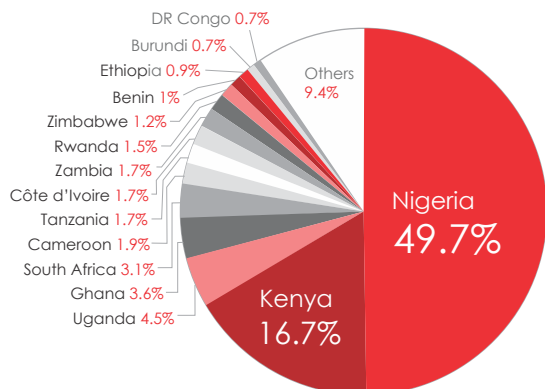
Agriculture, Education, Commerce and **ICT** were the leading sectors, contributing 55%.





THE SELECTED 1,000

DISTRIBUTION OF SELECTED 1,000 APPLICANTS BY COUNTRIES OF RESIDENCE



Country	Selected	%
Nigeria	497	49.7%
Kenya	167	16.7%
Uganda	45	4.5%
Ghana	36	3.6%
South Africa	31	3.1%
Cameroon	19	1.9%
Tanzania	17	1.7%
Côte d'Ivoire	17	1.7%
Zambia	17	1.7%
Rwanda	15	1.5%
Zimbabwe	12	1.2%
Benin	10	1%
Ethiopia	9	0.9%
Burundi	7	0.7%
DR Congo	7	0.7%
Others	94	9.4%

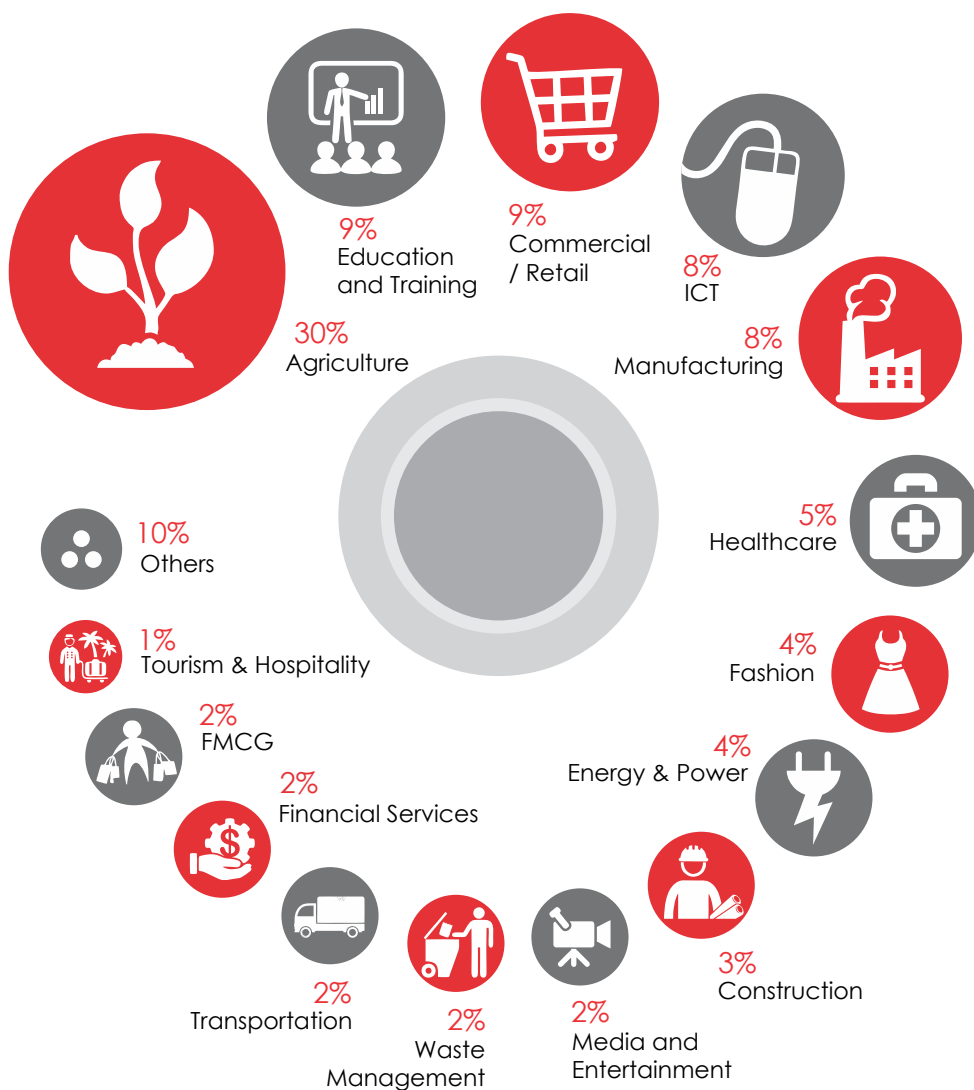
GENDER DISTRIBUTION

Female 29%
Male 71%

Nigeria	176	321
Kenya	31	81
Uganda	9	36
Ghana	7	29
South Africa	7	22
Cameroon	4	15
Tanzania	4	13
Côte d'Ivoire	1	16
Zambia	5	12
Rwanda	4	11

Gender distribution across the Top 10 TEEP 1,000 countries
Female Male

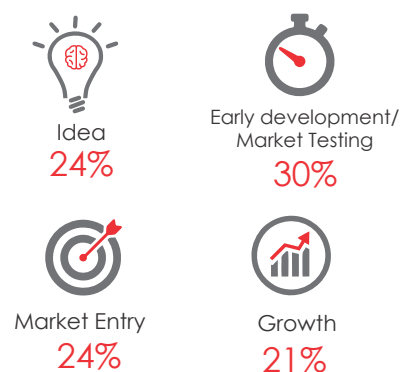
SECTOR DISTRIBUTION AMONG THE FINAL 1,000 SELECTED APPLICANTS



TEEP 1000 – AGE OF APPLICANTS



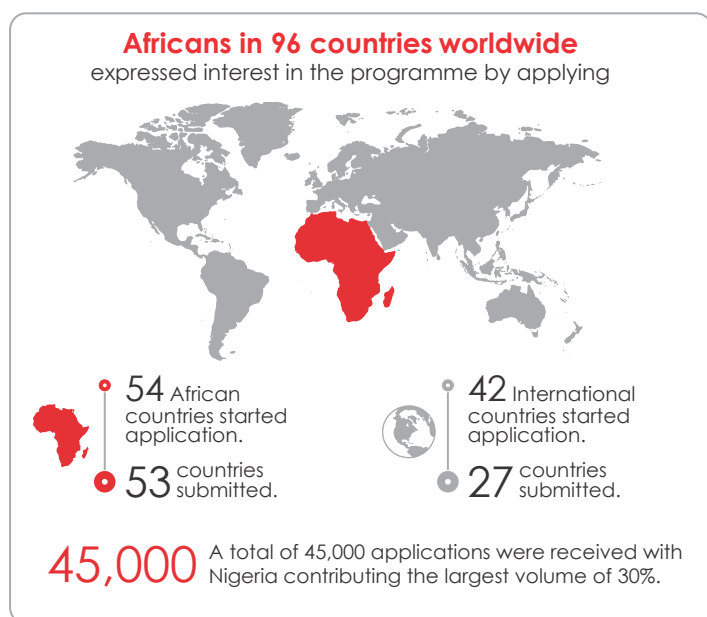
STAGE OF BUSINESS AMONG SELECTED 1000 ENTREPRENEURS



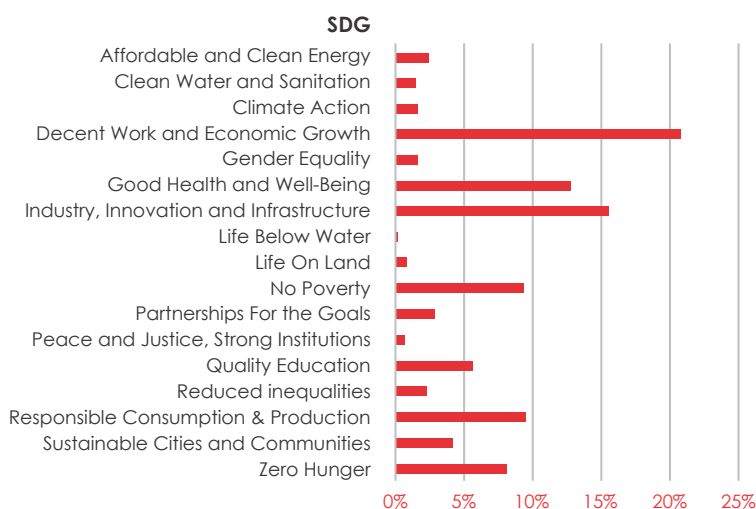


TEF ENTREPRENEURSHIP PROGRAMME 2016 APPLICATIONS AT A GLANCE

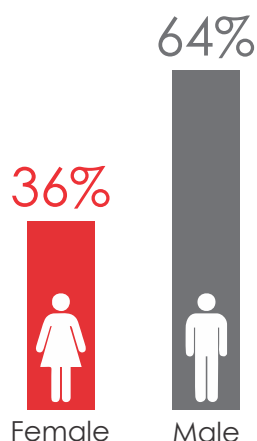
GLOBAL DEMOGRAPHY OF APPLICATIONS



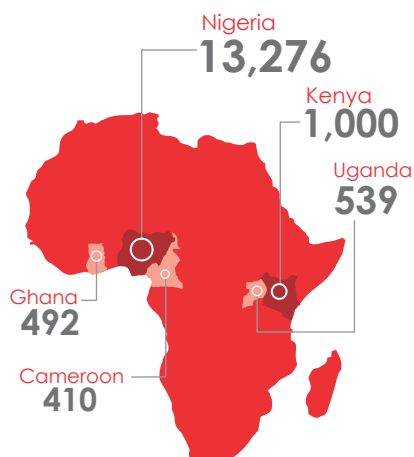
SUSTAINABLE DEVELOPMENT GOALS REPRESENTATION BY SECTORS



GENDER DISTRIBUTION

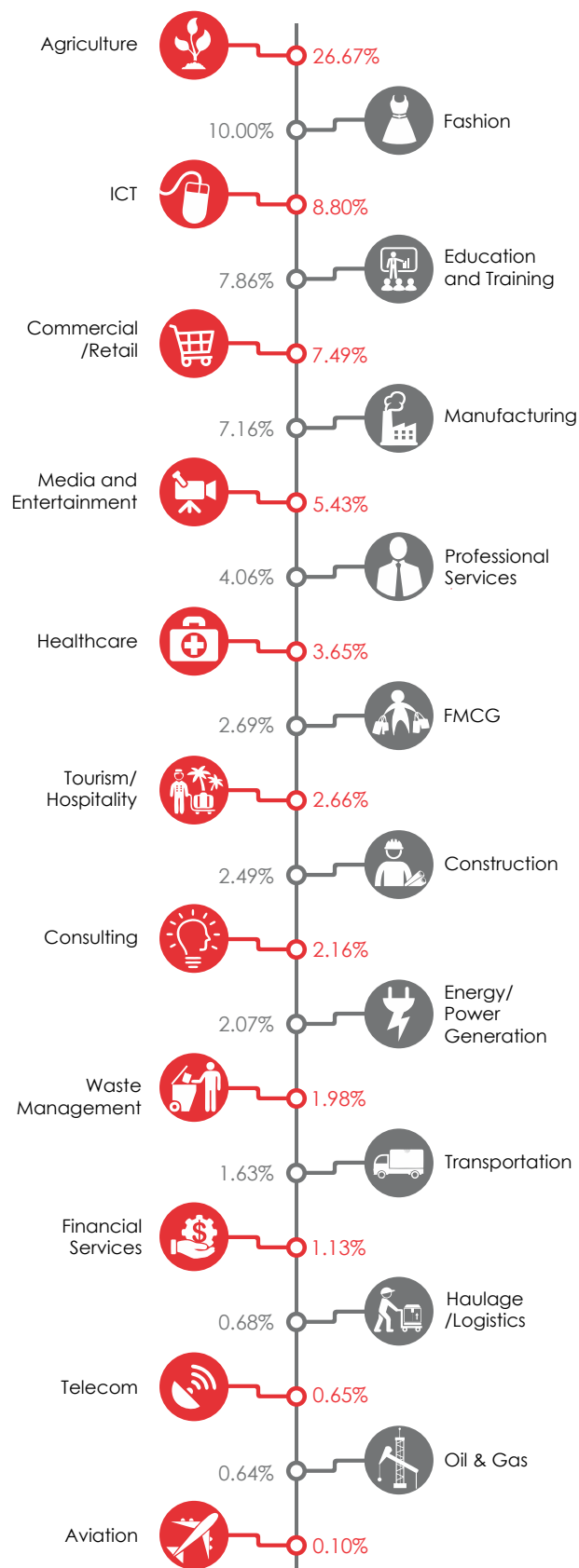


TOP 5 COUNTRIES BY NUMBER OF APPLICATIONS



SECTORS REPRESENTATION AMONG APPLICANTS

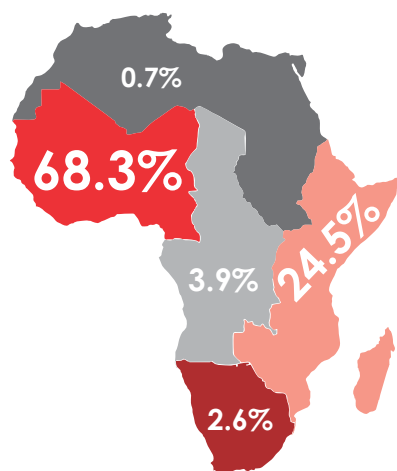
Agriculture leads the sectors represented in 2016 with 26.67%; a great number are into poultry and fish farming. **Fashion** and **ICT** followed in second and third with 10% and 8.8% respectively.





THE SELECTED 1,000

DISTRIBUTION OF SELECTED 1,000 APPLICANTS BY REGION



Western Africa 68.3%		
Nigeria	591	59.1%
Ghana	45	4.5%
CoteD'Ivoire	18	1.8%
Senegal	6	0.6%
Niger	4	0.4%
Benin	4	0.4%
Gambia	3	0.3%
Burkina Faso	3	0.3%
Liberia	2	0.2%
Cape Verde	1	0.1%
Togo	1	0.1%
Guinea	1	0.1%
Sierra Leone	1	0.1%
Mali	1	0.1%
Mauritania	1	0.1%
Guinea-Bissau	1	0.1%

Eastern Africa 24.5%		
Kenya	75	7.5%
Uganda	64	6.4%
Ethiopia	21	2.1%
Rwanda	20	2.0%
Zimbabwe	14	1.4%
Tanzania, U.R.	13	1.3%
Malawi	9	0.9%
Burundi	8	0.8%
Zambia	8	0.8%
Madagascar	3	0.3%
Mauritius	3	0.3%
Djibouti	2	0.2%
Somalia	2	0.2%
Seychelles	1	0.1%
Comoros	1	0.1%
Mozambique	1	0.1%

Central Africa 3.9%		
Cameroon	25	2.5%
Gabon	5	0.5%
Congo, DR	3	0.3%
Angola	1	0.1%
Equatorial Guinea	1	0.1%
Central African Rep.	1	0.1%
Sao Tome & Principe	1	0.1%
Chad	1	0.1%
Congo	1	0.1%

Southern Africa 2.6%		
South Africa	18	1.8%
Botswana	4	0.4%
Namibia	2	0.2%
Swaziland	1	0.1%
Lesotho	1	0.1%

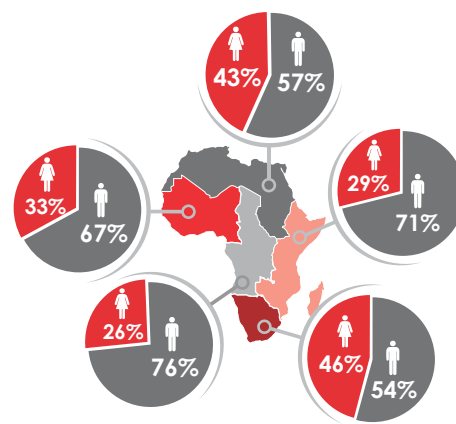
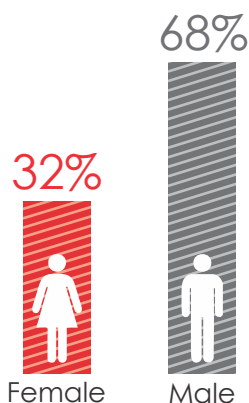
Northern Africa 0.7%		
Algeria	1	0.1%
Sudan	1	0.1%
South Sudan	1	0.1%
Egypt	1	0.1%
Tunisia	1	0.1%
Libyan Arab J.	1	0.1%
Morocco	1	0.1%

Fifty-three (53) African countries are represented in the final 1,000 applications, with Nigeria contributing 59%. The regions with the highest representation are West (68%) and East (25%) Africa.

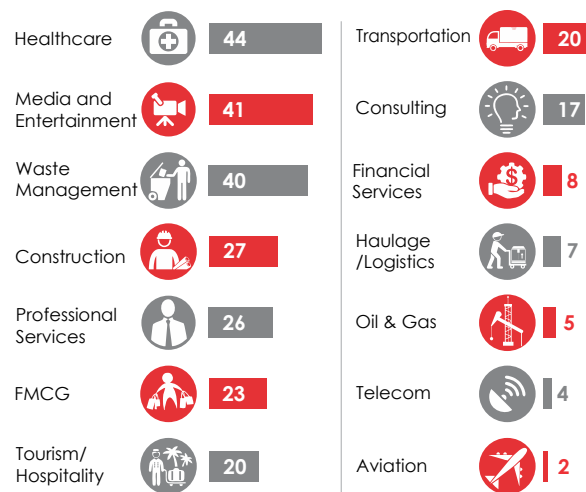
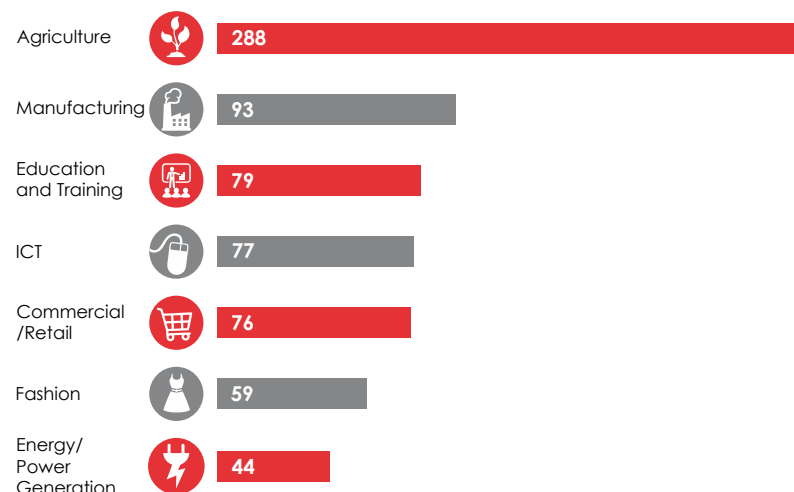
GENDER DISTRIBUTION

Thirty-two percent (32%) of the final 1,000 selected applicants are female.

Fifteen (15) countries had a higher female-to-male ratio in the final 1,000 entries: Algeria, Angola, Burkina Faso, Botswana, Cape Verde, Chad, Comoros, Congo, Gabon, Gambia, Madagascar, Morocco, Senegal, Sierra Leone and South Sudan.



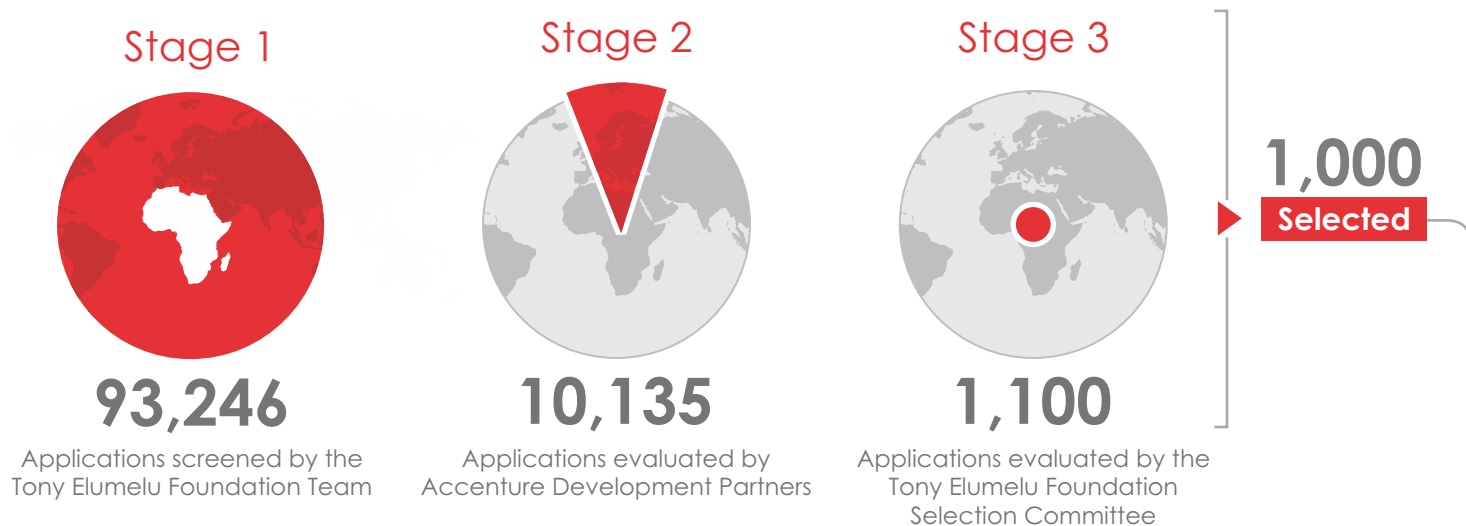
SECTOR DISTRIBUTION AMONG THE FINAL 1,000 SELECTED APPLICANTS





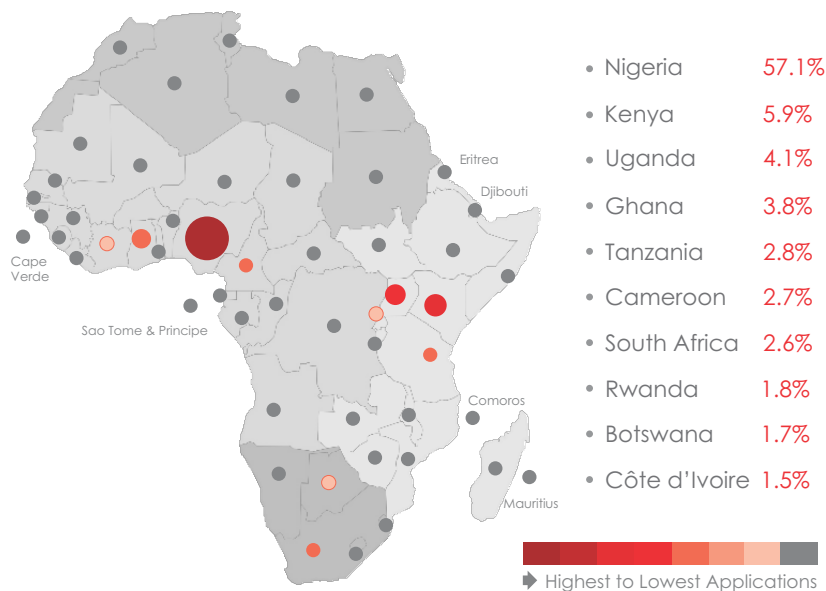
TEF ENTREPRENEURSHIP PROGRAMME 2017 APPLICATIONS AT A GLANCE

■ APPLICATION EVALUATION STAGES



■ DEMOGRAPHY OF APPLICATIONS HIGHLIGHTING TOP TEN COUNTRIES

Fifty-two (52) African countries were represented in the batch of 10,135, with Nigeria contributing 57% of applications

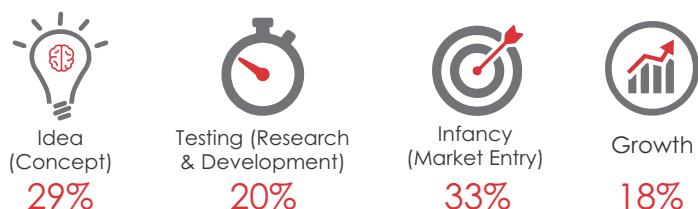


Selected Entrepreneurs will receive support from the Foundation in the form of:

-  Enterprise development toolkit
-  Business-relevant training
-  Mentoring
-  Access to professional networks
-  Business plan development
-  Seed capital of \$10,000 in two tranches

■ DISTRIBUTION OF APPLICATIONS BY STAGE OF BUSINESS

Majority of the applications received (62%) were from businesses in the idea /infancy stages



■ GENDER DISTRIBUTION



A total of 3,311 applications from the batch of 10,135 were from female entrepreneurs.

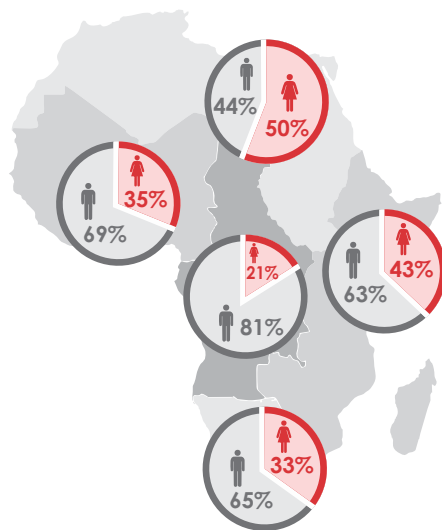


THE SELECTED 1,000

■ GENDER DISTRIBUTION OF THE SELECTED 1,000 APPLICANTS BY AFRICAN REGION

Western Africa	M	F
Nigeria	343	166
Ghana	18	6
Cote D'Ivoire	17	6
Benin	14	6
Togo	13	2
Sierra Leone	5	1
Niger	3	3
Senegal	2	3
Burkina Faso	3	0
Mali	2	0
Liberia	2	0
Mauritania	2	0
Cape Verde	1	2
Gambia	2	0
Guinea	2	0

Central Africa	M	F
Cameroon	16	5
Congo, DR	14	4
Gabon	7	2
Chad	6	0
Congo	4	0
Equatorial Guinea	1	1
Sao Tome & Principe	1	1
Angola	1	1
Central African Rep.	2	0



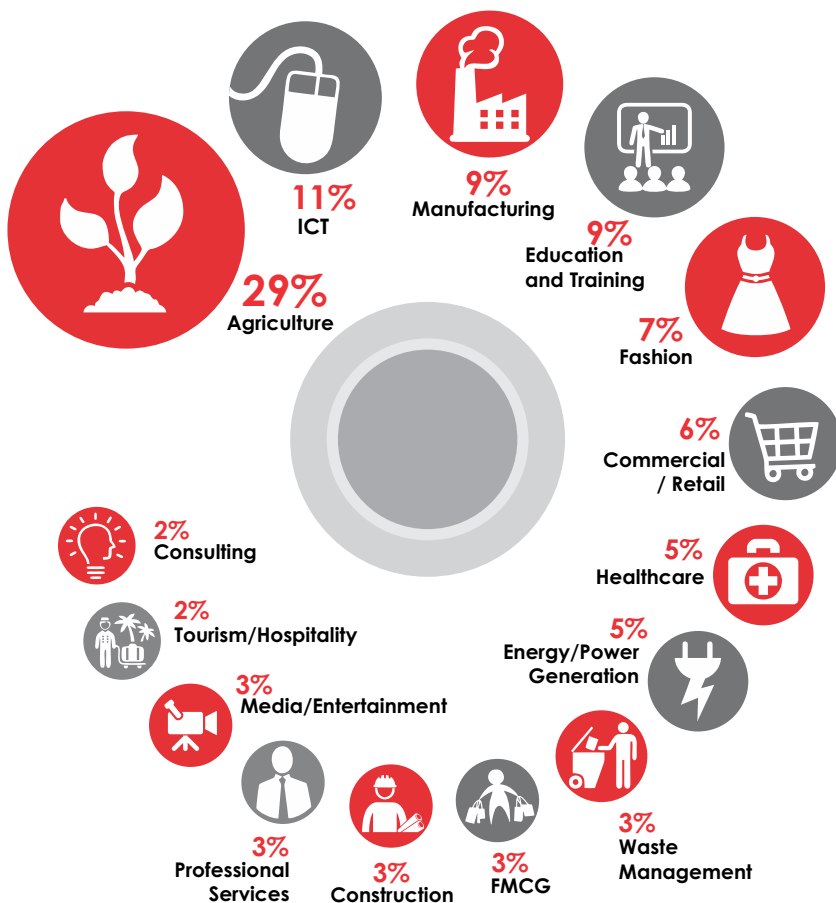
Southern Africa	M	F
South Africa	15	8
Botswana	5	0
Lesotho	1	2
Namibia	2	1
Swaziland	1	1

Northern Africa	M	F
Egypt	2	1
South Sudan	2	0
Algeria	0	3
Sudan	1	1
Tunisia	1	1
Libya	1	1
Morocco	1	1

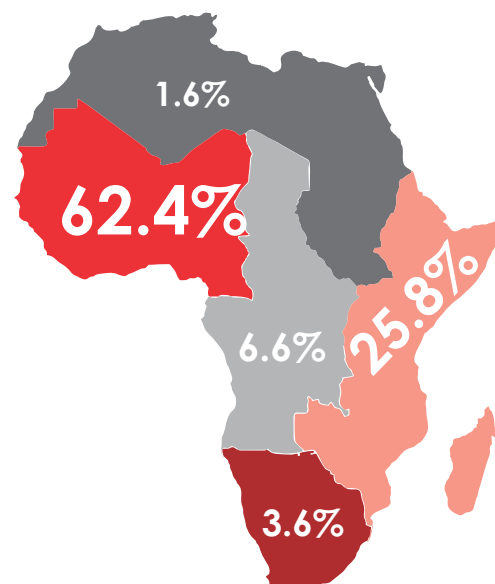
Eastern Africa	M	F
Uganda	39	35
Kenya	34	21
Tanzania, UR	25	11
Rwanda	12	11
Zambia	19	2
Zimbabwe	10	7
Ethiopia	9	1
Malawi	6	0
Djibouti	3	0
Burundi	2	0
Mozambique	1	1
Madagascar	0	2
Comoros	0	2
Eritrea	1	0
Mauritius	1	1
Somalia	2	0

Three countries have **100% female** representation in the top 1,000: Algeria, Comoros, and Madagascar.

■ SECTOR DISTRIBUTION AMONG THE FINAL 1,000 SELECTED APPLICANTS



■ DISTRIBUTION OF SELECTED 1,000 APPLICANTS BY AFRICAN REGION

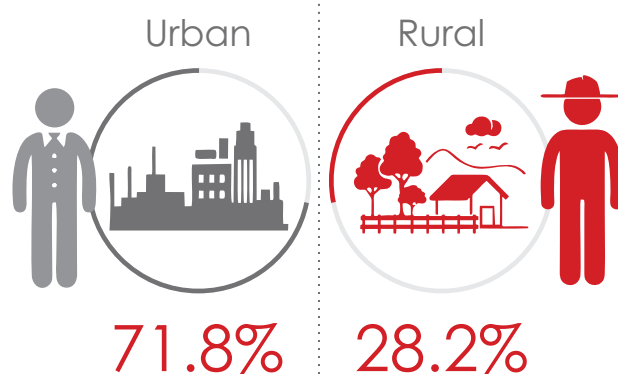
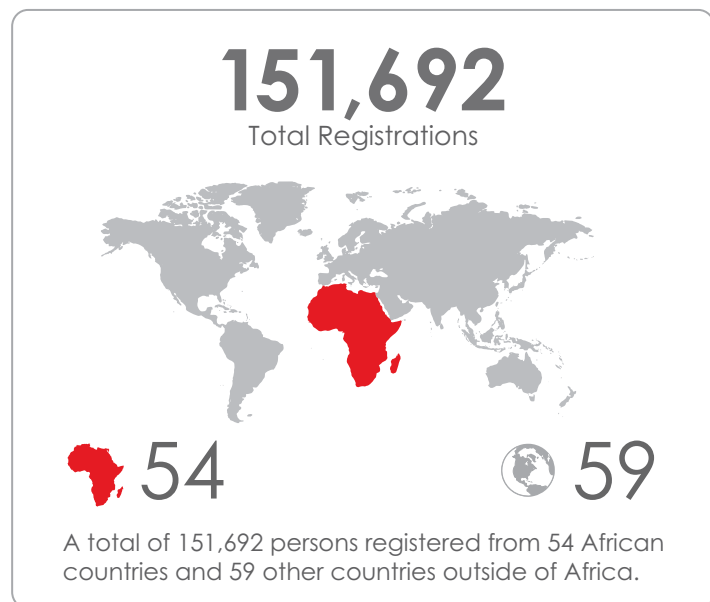


Fifty-two (52) African countries were represented in the final 1,000 applications. The highest regional representations were from the Western (62%) and Eastern (27%) African regions.



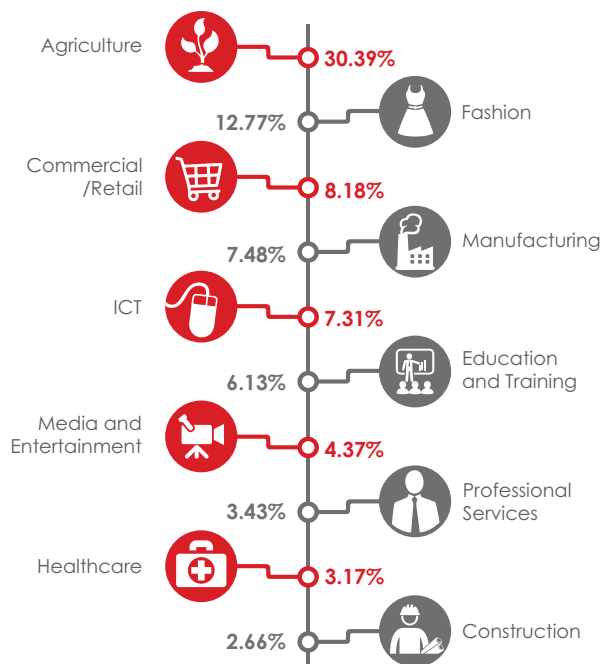
TEF ENTREPRENEURSHIP PROGRAMME 2018 APPLICATIONS AT A GLANCE

■ DEMOGRAPHY OF APPLICATIONS

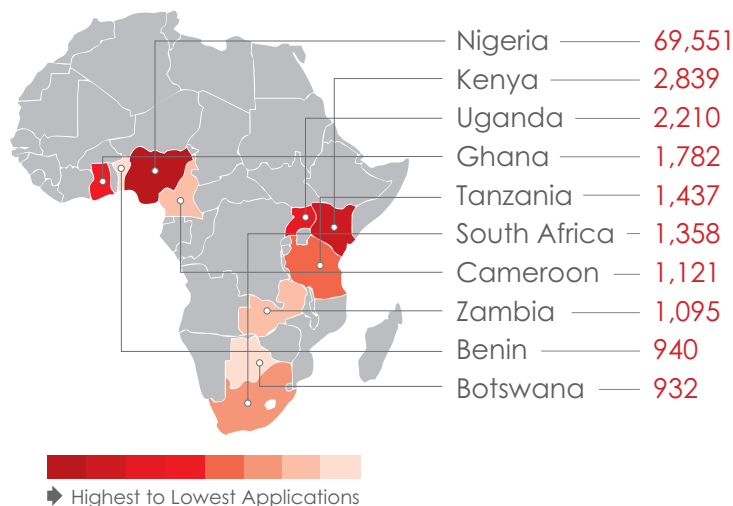


■ TOP 10 SECTORS BY APPLICATION

Agriculture (30.39%), Fashion (12.77%) and Commercial/Retail (8.18%) lead as top 3 sectors

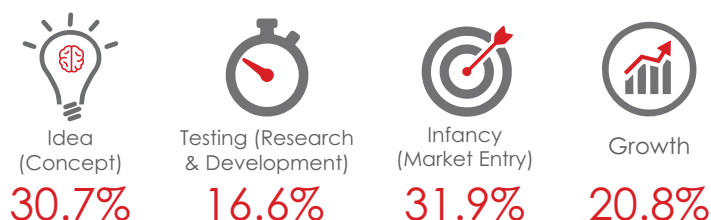


■ TOP 10 COUNTRIES BY APPLICATION

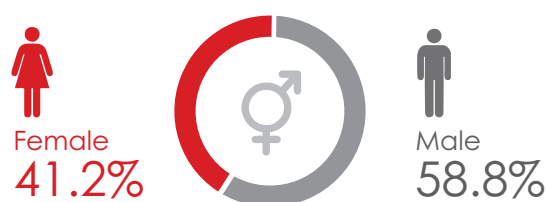


■ APPLICATIONS BY STAGE OF BUSINESS

Majority of the applications received (79.2%) were from new businesses in the idea to infancy stages



■ GENDER DISTRIBUTION AMONG APPLICANTS



There was a 2% increase in female applications compared to 2017's figures of 39.17%.



THE 2018 SELECTION

■ SELECTED BATCH OF 1,000 BY REGION

Fifty-one (51) African countries were represented in the batch of selected 1,000, with Nigeria comprising 26%.

423



Western Africa	423
Nigeria	263
Ghana	40
Benin	32
Cote D'Ivoire	12
Senegal	11
Liberia	8
Togo	7
Niger	7
Mali	7
Sierra-Leone	6
Cape Verde	5
Mauritania	5
Guinea	5
Gambia	5
Guinea-Bissau	5
Burkina Faso	5

392



Eastern Africa	392
Uganda	125
Kenya	74
Tanzania	48
Rwanda	47
Zambia	22
Zimbabwe	21
Ethiopia	10
Malawi	8
Mozambique	5
Madagascar	5
Djibouti	5
Mauritius	5
Comoros	5
Burundi	5
Seychelles	4
Eritrea	3

86



Central Africa	86
Cameroon	38
Congo, DR	9
Congo	7
Central African Rep.	7
Angola	5
Sao Tome & Principe	5
Gabon	5
Chad	5
Equatorial Guinea	5

74



Southern Africa	74
Botswana	29
South Africa	28
Swaziland	7
Lesotho	5
Namibia	5

25



Northern Africa	25
Algeria	5
Egypt	5
Libya	5
Morocco	5
Tunisia	5

■ GENDER DISTRIBUTION

A total of **353** applicants from the selected batch of 1,000 are female entrepreneurs, representing 35% of selected applicants.

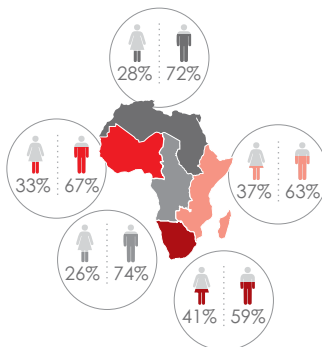
Madagascar (100%), Seychelles (75%), DRC (67%), Lesotho (60%) and Morocco (60%) had more female applicants selected.

35%



Female Male

65%

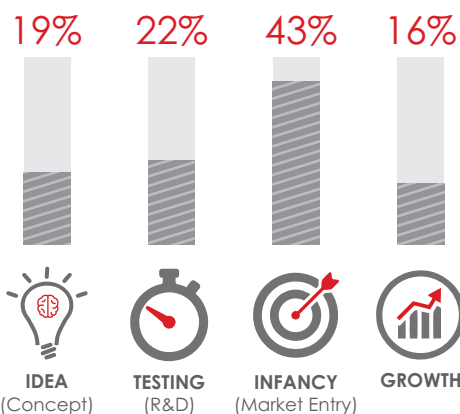


■ SECTOR DISTRIBUTION



■ DISTRIBUTION BY STAGE OF BUSINESS

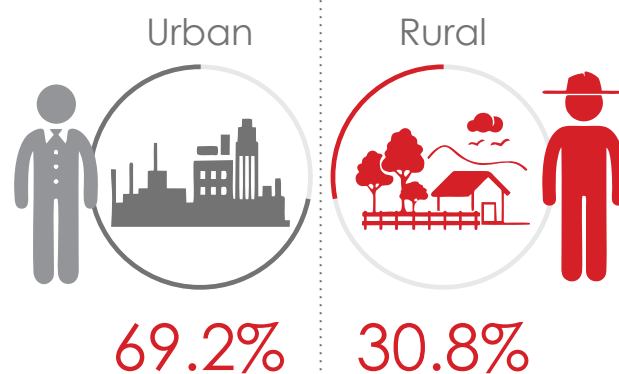
Majority of the selected applications (59%) are from late-stage businesses in the Market Entry and Growth stages.





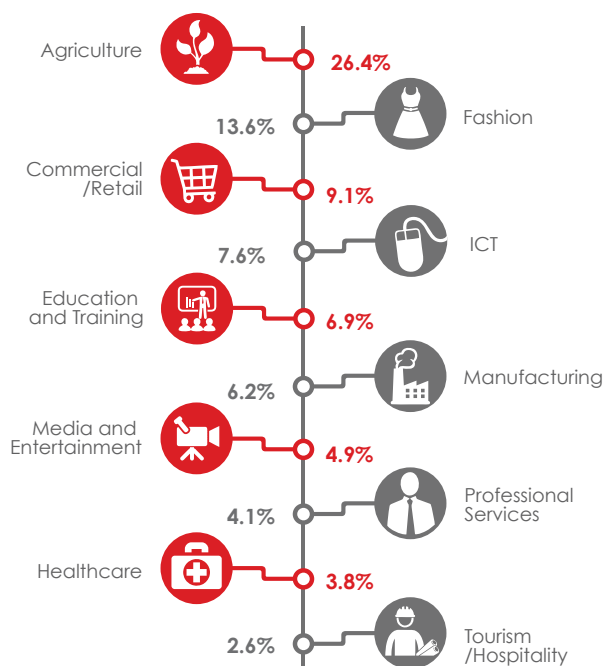
TEF ENTREPRENEURSHIP PROGRAMME 2019 APPLICATIONS AT A GLANCE

DEMOGRAPHY OF APPLICATIONS

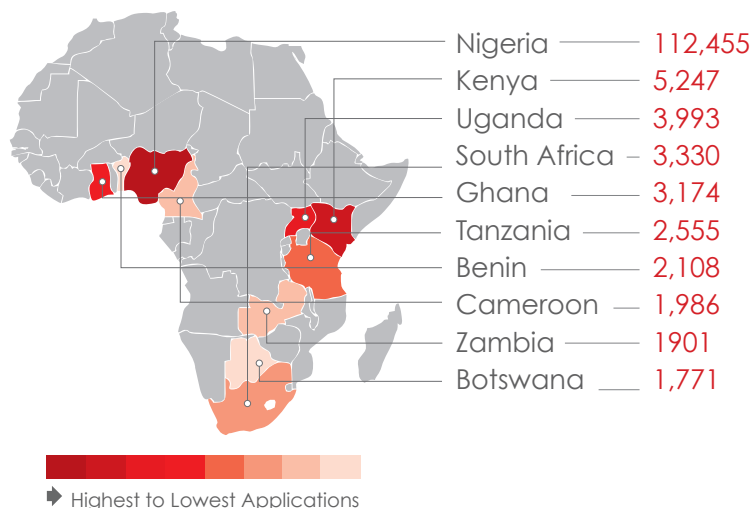


TOP 10 SECTORS BY APPLICATION

Agriculture (26.4%), Fashion (13.6%) and Commercial/Retail (9.1%) lead as top 3 sectors

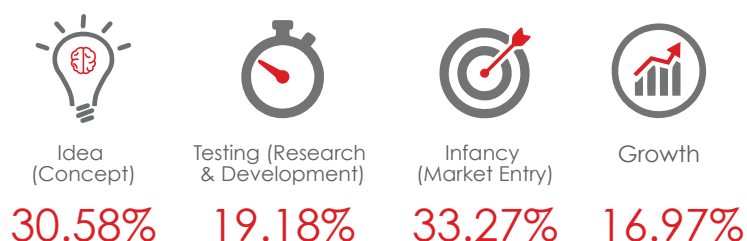


TOP 10 COUNTRIES BY APPLICATION

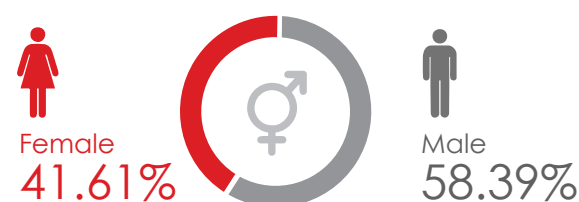


APPLICATIONS BY STAGE OF BUSINESS

Majority of the applications received (83.03%) were from new businesses in the idea to infancy stages



GENDER DISTRIBUTION AMONG APPLICANTS



There was a 1% increase in female applications compared to 2018 figures of 41.2%.



THE 2019 SELECTION

■ SELECTED BATCH OF 3,050 BY REGION

Fifty-three (53) African countries were represented in the batch of selected 3,050, with Nigeria comprising 36%.

1,758



773



346



146



27



Western Africa 1758

Benin	156
Burkina Faso	23
Cameroon	102
Cape Verde	7
Chad	51
Cote D'Ivoire	23
Gambia	5
Ghana	58
Guinea	15
Guinea-Bissau	52
Liberia	32
Mali	35
Mauritania	14
Niger	24
Nigeria	1112
Senegal	14
Sierra Leone	7
Togo	28

Eastern Africa 773

Burundi	53
Comoros	22
Djibouti	3
Eritrea	2
Ethiopia	52
Kenya	116
Madagascar	54
Mauritius	10
Rwanda	77
Seychelles	2
Somalia	2
South Sudan	54
Tanzania	65
Uganda	261

Southern Africa 346

Angola	19
Botswana	62
Lesotho	5
Malawi	37
Mozambique	9
Namibia	19
South Africa	40
Swaziland	24
Zambia	77
Zimbabwe	54

Central Africa 146

Central African Rep.	2
Congo	15
Congo, DR	102
Equatorial Guinea	4
Gabon	16
São Tomé & Príncipe	7

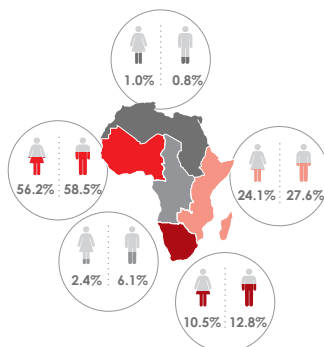
Northern Africa 27

Algeria	6
Egypt	7
Libya	1
Morocco	10
Tunisia	3

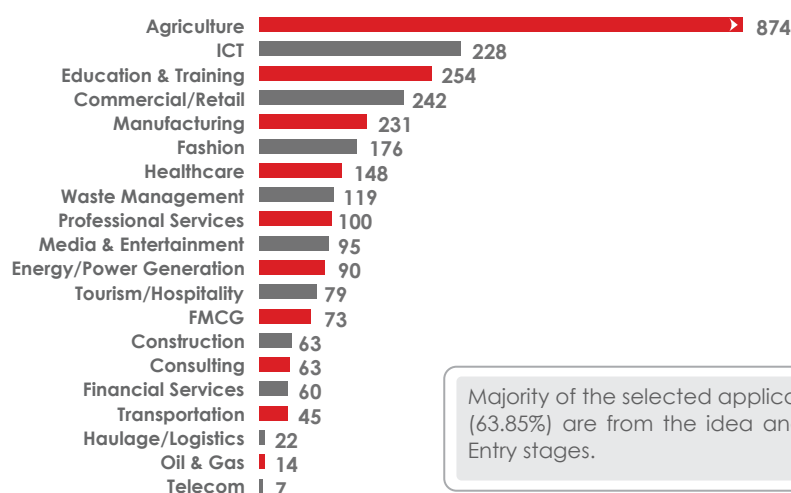
■ GENDER DISTRIBUTION

A total of 1,087 applicants from the selected batch of 3,050 are female entrepreneurs, representing 35.6% of selected applicants.

Still on same: Seychelles (100%), Sierra Leone (71.4%), Namibia (68.4%) and Madagascar (61%) had more female applicants selected.



■ SECTOR DISTRIBUTION



Majority of the selected applications (63.85%) are from the idea and Market Entry stages.

■ ADDITIONAL 2,050 ENTREPRENEURS SELECTED IN 2019



■ DISTRIBUTION BY STAGE OF BUSINESS

